



Cylindrical Lifepo4 battery Specification

Model: IFR 32650 12V 200Ah

Customer: _____

Customer approval: _____

Date: _____



KEY FEATURES AND BENEFITS

- + High usable energy over a wide state of charge (SOC) range and very low cost per Watt-hour
- + Superior cycle life from OptimumNano's patented lithium iron Phosphate chemistry
- + Robust cylindrical structure to protect cells against physical damage and/or vibration hazards

12V 200Ah Battery pack specification

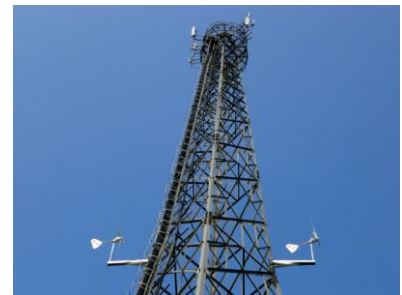
Nominal Capacity @ 0.2C	200Ah	Cell Configuration	4S40P
Nominal Voltage	12.8V	Total Cell Quantity	160pcs
Discharge Cut-off Voltage	10V	Impedance (Max, at 1000Hz.)	≤ 50 mΩ
Charge Cut-off Voltage	14.6V	Dimensions(mm)	525*270*220 (±5MM)
Charge Current (Standard. Continuous)	40A (0.2C)	Weight(Approx,including case)	35kg
Continuous Discharge Current	Customized	Charge Temperature Range	0°C ~ 45°C
Peak Discharge (Max.10 sec Duration)	Customized	Discharge Temperature Range	-20°C ~ 60°C
Cycle life (1 C/1C 100% DOD)	2000 cycles	Charge method	CC/CV



PEV&HE Vehicle



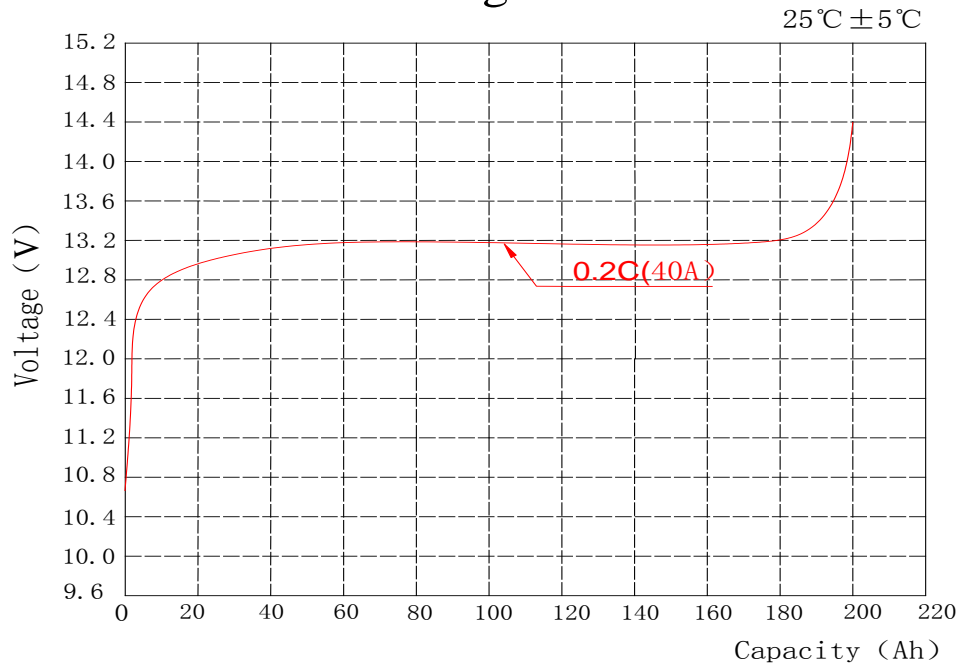
Solar&wind system



Communication Base

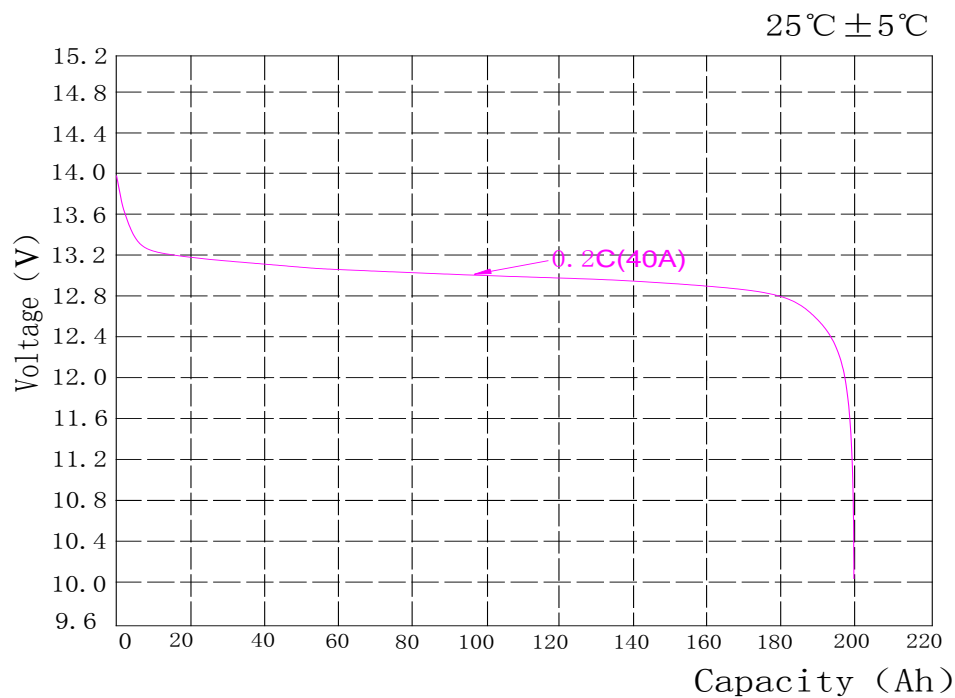
Charge Profiles at Room Temperature

charge curve



Discharge Profiles at Room Temperature

Diploid discharge curve



Battery Management System

OptimumNano's cylindrical cells are optimized through the use of its battery management system (BMS), through monitoring cells, to provide protection against overcharge, over discharge, short circuit. Also it enables every battery pack to obtain independent balancing function. Overall, the BMS helps to ensure safe and accurate operation.

Warning&Notice!

Never throw the battery into water, keep it under dry, shady and cool circumstance when not use.

Never keep the battery beside high temperature source examples: fire, heating machine and ect.

Please use the stated charger when charging.

Never upside down the positive and negative.

Never cut the battery in socket directly

Never throw the battery into fire or heating machine.

Never connect the positive and negative of battery with metal.

Never ship or store the battery together with metal.

Never knock, throw or trample the battery.

Never cut through the battery with nail or other edge tool.

Never use the battery under strong static and strong magnetic field, otherwise it will destroy the protecting device.

If battery leaked, the electrolyte get into eyes, please don't knead, please wash eyes by water and send to hospital. Otherwise it will hurt eyes.

If battery emit peculiar smell, heating, distortion or appear any unconventionality during using, storage or charging process, please take it out from device or charge and stop using.

If the pole was duty, please clear it before using.

Please encase the pole with isolative paper when you want to abandon the battery to prevent exploding and getting into fire.

Preliminary specification ,performance may very depending on use condition and application.

OptimumNano makes no warranty explicit or implied with this datasheet. Contents subject to change without notice.

CORPORATE HEADQUARTERS

OptimumNano Energy Co.,Ltd
No.68,Lanjing North Road,
Ping Shan New District,Shenzhen
+86(0755) 86430787

www.optimumnanoenergy.com

沃特玛®
OptimumNano