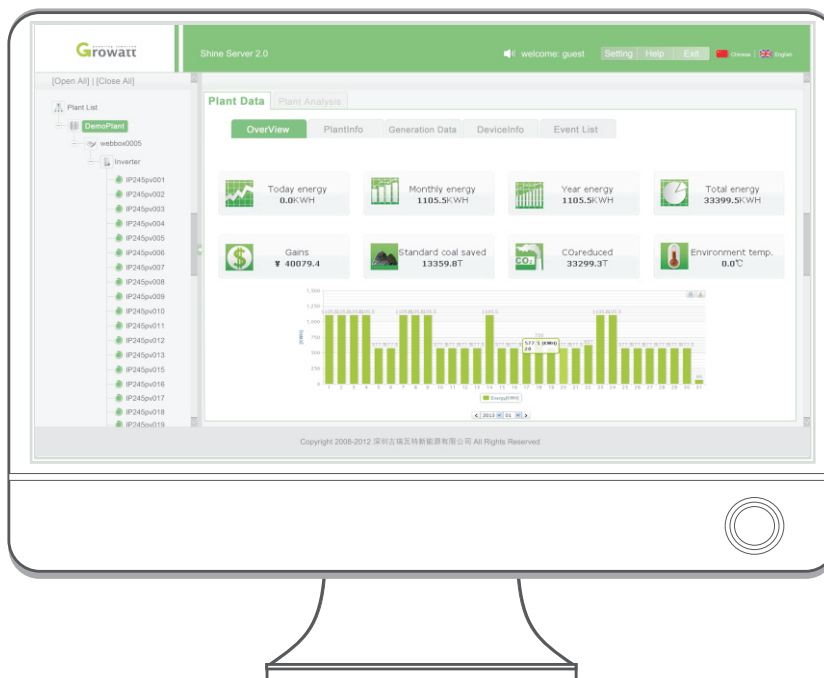


## Shine Server

Whether for residential system or commercial system, even for PV power station, Growatt could deliver a satisfactory monitoring solution based on Shine Server, which acts as a reliable, powerful and secure web-enabled platform. With flexible and sophisticated design, Shine Server provides highly interactive and immediate access to key system data at any time and any place. Special views are enabled accounting for the different requirements of different applicants and target groups. The powerful analysis and reporting functions help owners and operators to improve the productivity of PV plant and the efficiency of operations.

### Features

- ▶ Ease of operation and maintenance
- ▶ Quick overview of all PV plant status
- ▶ Monitor and record several of PV plants with centralized management
- ▶ Professional analysis function to help maximize the system performance
- ▶ Real-time access to key performance worldwide via PC or mobile phones



## GROWATT NEW ENERGY TECHNOLOGY Co.,LTD

A: Building B, Jiayu Industrial Zone, #28 Guanghui Road, Longteng Community, Shiyan, Baoan District, Shenzhen, P.R.China.

T: + 86 755 2747 1900 F: + 86 755 2749 1460 E: info@ginverter.com

## Datasheet

### Shine Server

<b>Languages</b>	
Available languages	English, Chinese, French, Japanese
<b>System requirements</b>	
Supported operating systems	All
Recommended browsers	Internet Explorer as of version 8, Firefox as of version 5, Google Chrome as of version 14, Safari as of version 5, Opera as of version 11
Supported data logger	Shine WebBox, Shine Pano, Wi-Fi Module
<b>Access</b>	
Website	<a href="http://server.growatt.com">http://server.growatt.com</a>
<b>Plant information</b>	
Plant overview	Quick yield overview of all your PV plants
Specified plant	All important data at a glance including energy output, yield gains, environmental status
Plant installation data	Summary of all plant information which contains installation data, location data and income data
Device overview	Display of all important data about data logger, inverters, environment monitor, smart meter and other key devices
Time periods	5 mins
<b>Plant management</b>	
Account	User could manage all PV plants with one same account
<b>Monitoring</b>	
Inverter status	All inverter running status are recorded automatically. The warning of fault is highlighted and immediate.
<b>Status reporting</b>	
Event reports	Timely e-mail reports on system fault and plant error.
<b>Background operating</b>	
Plant management	Add new plant, edit and delete existed plant
Device management	Intuitive operation to manage all devices
Inverter setting	simple parameter setting for inverters including power management

## Datasheet

### Wi-Fi Module

<b>Communication</b>	
Frequency range	2.412GHz-2.484GHz
<b>General data</b>	
Dimensions (W/H/D)	135/79/29mm
Weight	63g
Protection rating	IP 65
operating temperature range	-25°C ~ +55°C